

# Kapture.IO

*Intelligent Quality Management System (QMS)*

**Kapture.io**



# Checks - Extension

*Kapture.io*



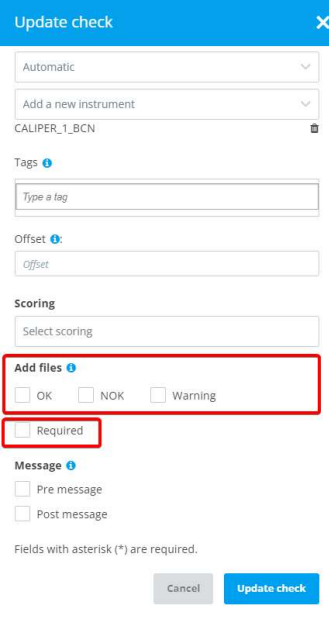
## Checks: Add images

Pictures can be added to the checks to ensure traceability or to track all relevant control steps and/or defects.

On PCs/laptops, tablets or mobiles, an image can be added from a folder or an external device/camera can be used to take a picture.

For this, the check must be configured beforehand during creation or modification:

1. In the "Add files" section, you can select when the image is required depending on the status of the check.
2. If it is strictly necessary, it can be configured in such a way that it is always mandatory to upload an image by checking the "Required" option.



Update check

Automatic

Add a new instrument

CALIPER\_1\_BCN

Tags

Type a tag

Offset

Offset

Scoring

Select scoring

Add files

OK  NOK  Warning

Required

Message

Pre message

Post message

Fields with asterisk (\*) are required.

Cancel Update check

Program

## Checks: Add images



During the execution of the Control Guide, depending on its configuration/status, an image icon will appear in the bottom right corner of the check box. By clicking on it, you can attach images or take photos.





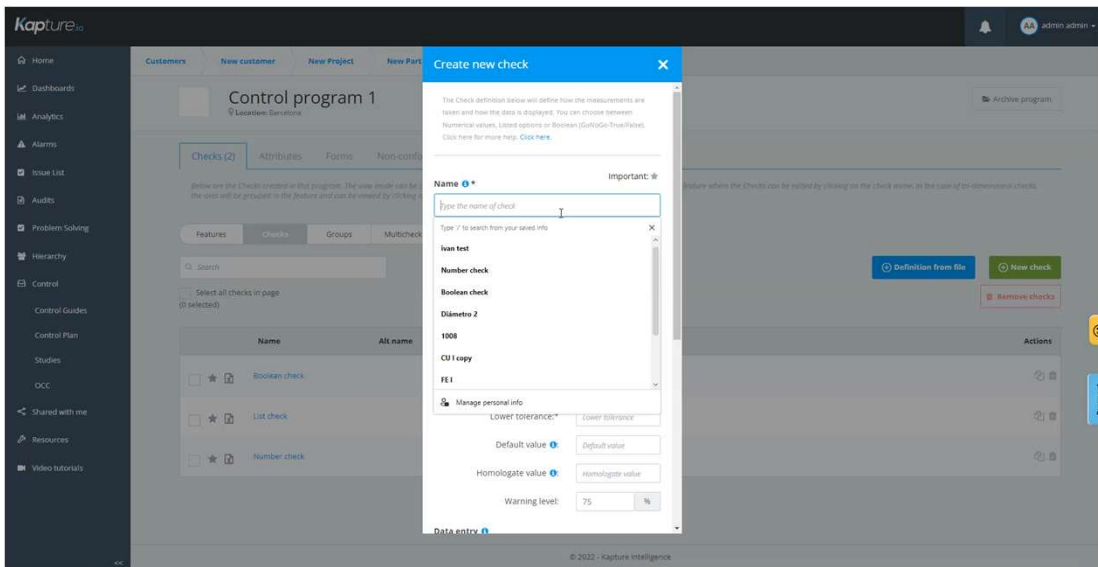
# Program

## Checks: Cosmetic

Used to position the possible defects of our part on a grid.

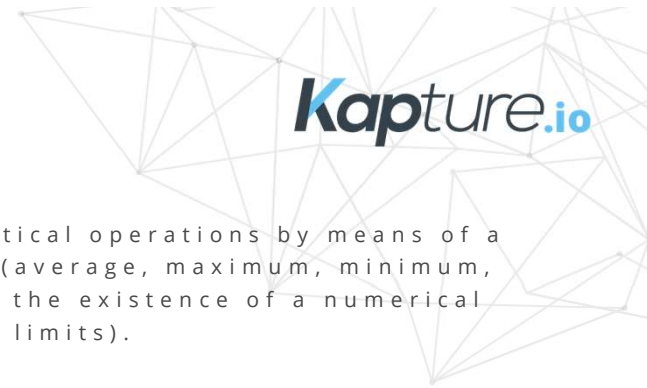
Options:

- Check name.
- Alternative name.
- Check class: for later search and filtering (editable in Account settings).
- Code: reference or code of each defect.
- Comment and image: possibility to add a comment or a sample image of the defect (used in Kapture Win\*).



Cosmetic		Select table	
Defects			
<input type="checkbox"/>	Cosmetic check	A	B
1			
2			
3			

\* Currently unused.



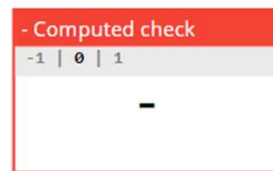
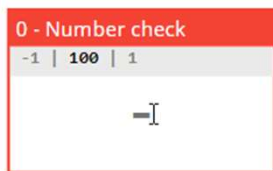
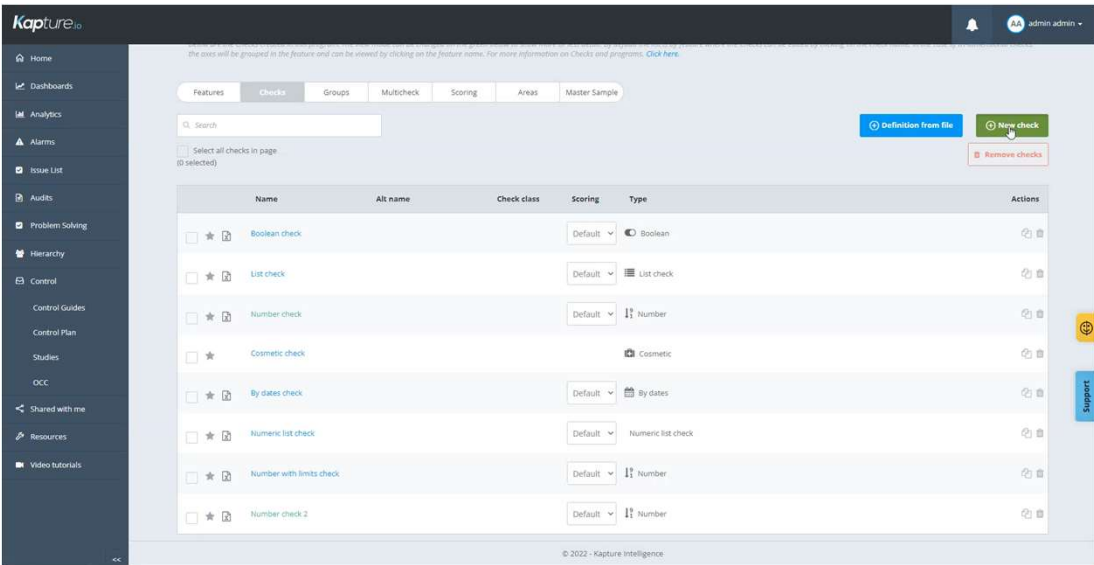
## Program

# Checks: Computed

Used to execute mathematical operations by means of a previously fixed formula (average, maximum, minimum, etc.). It requires at least the existence of a numerical check (with tolerances or limits).

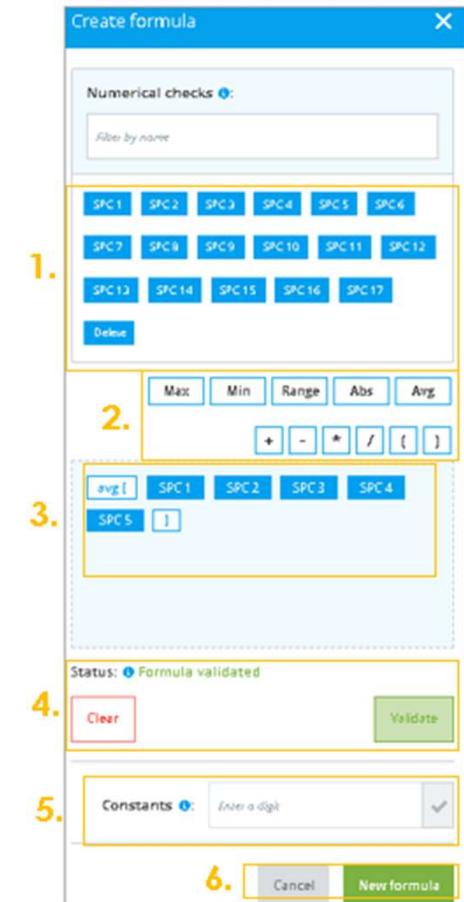
### Options:

- Name of the check.
- Alternative name.
- Type of check: for later search and filtering (editable in Account settings).
- Nominal value.
- Upper and lower tolerances
- Default value: possibility of setting one of the two answers (the one most frequently given) to speed up the execution of the check.
- Approved value: expected or desired value (informative).
- Add file: possibility to take a picture or attach a file to justify the result. It can be mandatory.
- Before being able to create our check, we must define and validate the formula of the operation to be executed. There are predefined formulas for maximum, minimum, range, absolute value and average.
- It has the basic operations and brackets to write them.



## Checks: Computed - options

1. Checks available in our program for use in the formula: These checks can be numeric checks, numeric list checks and calculated checks.
2. Mathematical operations: Maximum, minimum, range, absolute value, average, addition, subtraction, multiplication and division are available in Kapture.io.
3. Formula summary.
4. Formula validation: This action is necessary to avoid possible indeterminacy of the formula.
5. Constants: If necessary, numerical constants can be added to the formula.
6. New formula: To generate the formula.



# Kapture.IO

*Intelligent Quality Management System (QMS)*

-  [sales@kapture.io](mailto:sales@kapture.io)
-  [www.kapture.io](http://www.kapture.io)
-  [Kapture.io](https://www.linkedin.com/company/kapture-io)
-  [@Kapture\\_io](https://twitter.com/Kapture_io)
-  [@kapture.io](https://www.instagram.com/kapture.io)
-  [Beacons.ai/kaptureio](https://beacons.ai/kaptureio)

**Kapture.io**

