

Kapture.IO

Intelligent Quality Management System (QMS)

Kapture.io



Cosmetic control

Kapture.io



Cosmetic program

To perform a cosmetic check, a program must be created in the same way as was done in the previous course with the generic program. In this case, it must contain cosmetic checks.

1. Create defects (checks).
2. Create attributes (if applicable).

Note that if you want to use attributes in cosmetic programs, these attributes must be loaded in the generic forms.

These parameters cannot be loaded in cosmetic forms.

Cosmetic Control
Location: Barcelona

Archive program

Checks Attributes Forms Non-conformities

Below are the Checks created in this program. The view mode can be changed on the green below to show more or less detail. By default the list is by feature where the Checks can be edited by clicking on the check name. In the case of tri-dimensional checks, the axes will be grouped in the feature and can be viewed by clicking on the feature name. For more information on Checks and programs. [Click here](#).

Features Checks Groups Multicheck Scoring Areas Master Sample

Definition from file New check

✓ Grazed	COSMETIC
✓ Dissected Tissue	COSMETIC
✓ Irregular Tissue	COSMETIC
✓ Dimensional Deform.	COSMETIC
✓ Discoloured	COSMETIC
✓ Gap	COSMETIC
✓ Broken	COSMETIC
✓ Cracked	COSMETIC

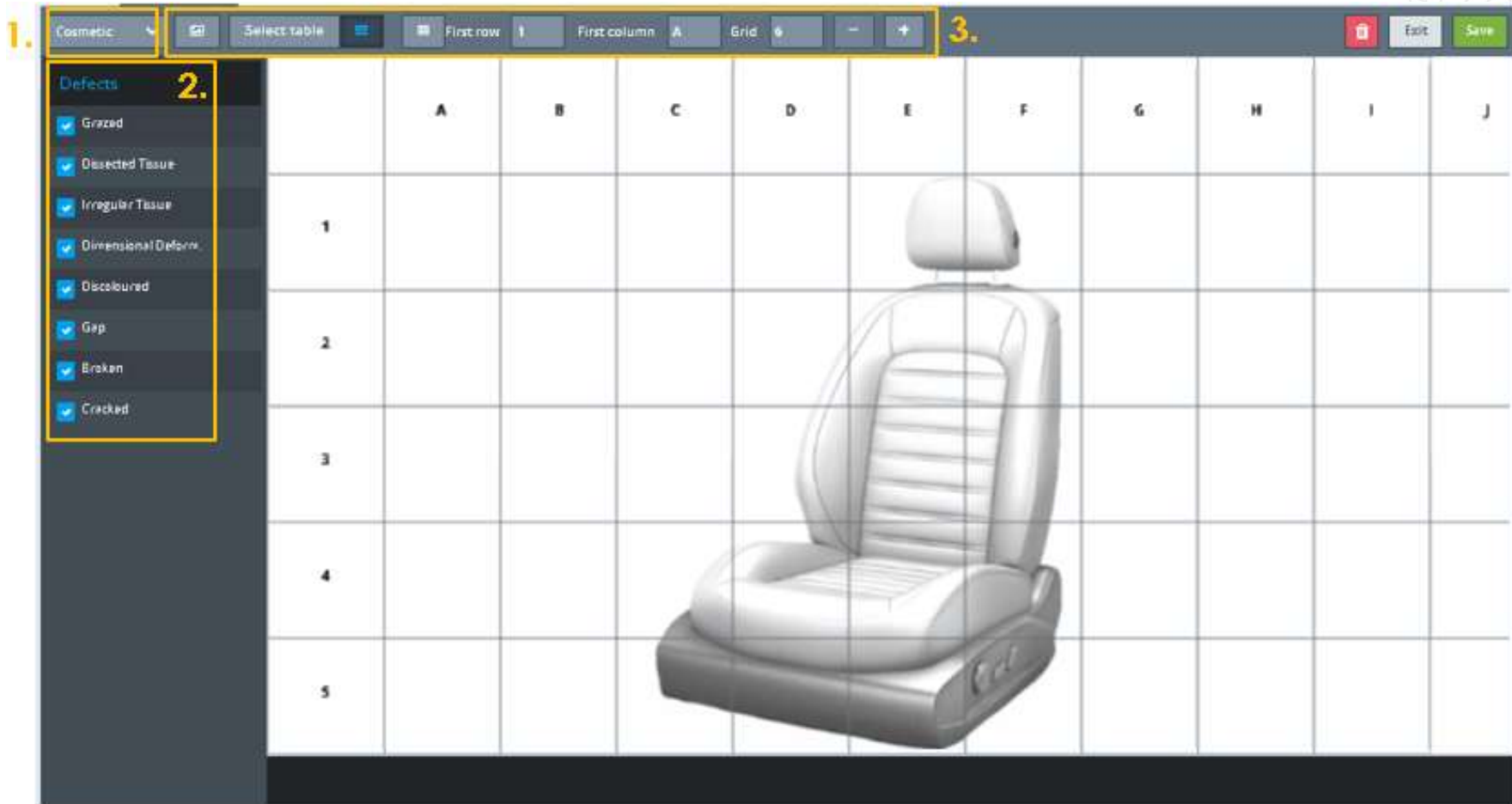
Cosmetic form



1. Form page type: Cosmetic form.
2. Cosmetic defects: All generated defects are available here for use on the form pages. Cosmetic checks to be applied on the form page must be selected. If not activated, these defects will not appear on the corresponding form page.
3. Cosmetic resources of the form:
 - Images: to add images to the form. There is the possibility to increase and decrease the size of the images and also to move these images around the form.
 - Important note: to perform these actions, the grid button must first be deselected.
 - Grid dimensions: to increase the number of squares on the form to be more precise with the selected area.
 - Grid identification: if you need to change the identification of the rows and columns.

Program Cosmetic form

Kapture.io

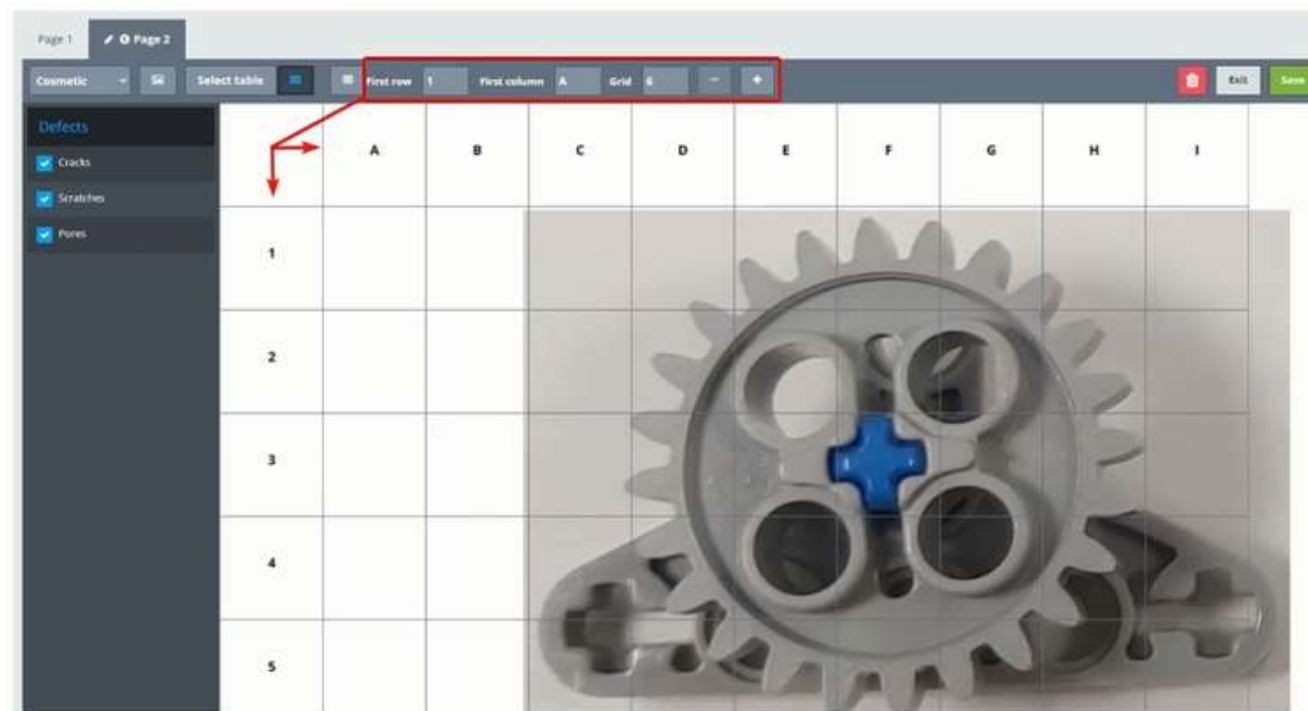


Program

Kapture.io

Cosmetic form

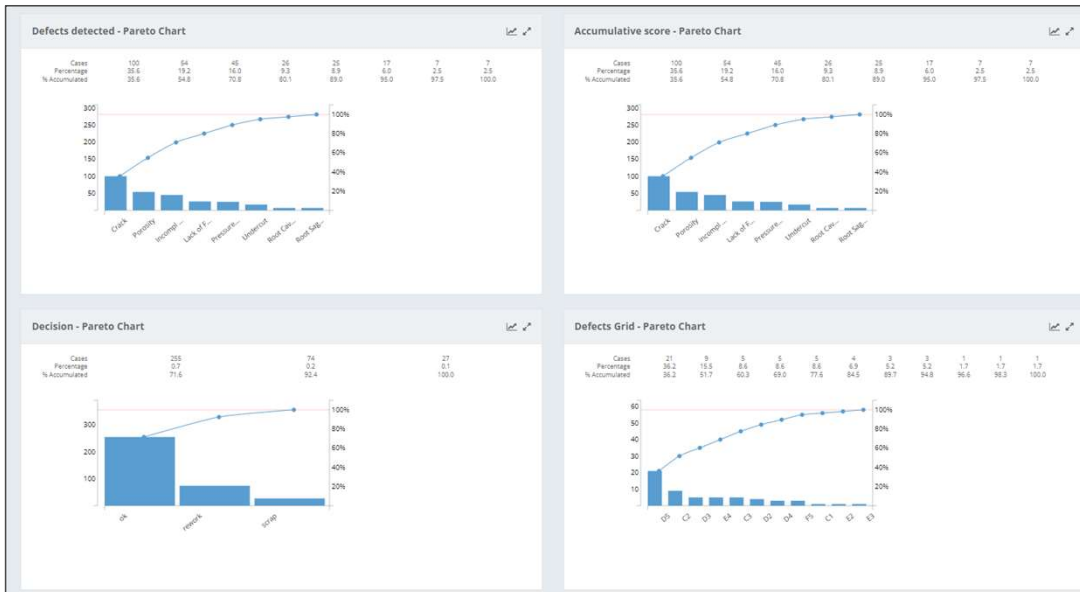
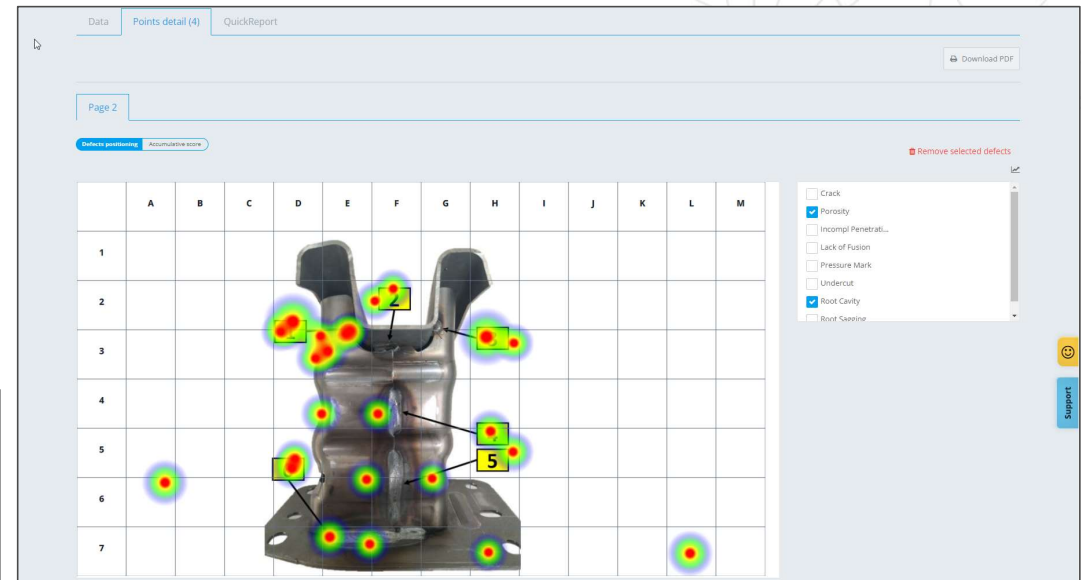
Important note: once you start taking measurements with a cosmetic program, you will not be able to modify the squares and grid dimensions. This fact is completely obvious because the aim is not to corrupt the previous measurements and their heat maps related to the different coordinates of the shape.



www.kapture.io

Cosmetic control – Data visualization

Once the defects have been selected, in the points detail tab, the image of the part is displayed in the grid and by selecting again the defect you wish to see, a heat map is generated with both the position and the density of the defects.




It also generates different paretos of the detected defects, accumulated score, decision taken (ok, rework or scrap) and the exact position in the grid.

*In cosmetic controls it is not possible to export the information to Excel or csv.


Kapture.IO


Intelligent Quality Management System (QMS)

 sales@kapture.io

 www.kapture.io

 [Kapture.io](https://www.linkedin.com/company/kapture-io)

 [@Kapture_io](https://twitter.com/Kapture_io)

 [@kapture.io](https://www.instagram.com/kapture.io)

 [Beacons.ai/kaptureio](https://beacons.ai/kaptureio)

Kapture.io

